

MOTOR SPECIFICATION

PAGE

1 of 2

MODEL : S9I120GX-V12CE(A205)

Electrical

- 1. TYPE : CONDENSER RUN TYPE INDUCTION MOTOR
(SPEED CONTROL TYPE)
- 2. POWER SOURCE : AC 220V 50Hz 1Ph.
- 3. CAPACITOR : 7.0 μ F 450VAC
- 4. POLES : 4P



5. NO LOAD CHARACTERISTICS

At MOTOR+CONTROLLER(Volume Max.)

- 5-1. CURRENT : 0.46 A
- 5-2. INPUT : 91.0 W
- 5-3. SPEED : 1450 r/min Min.
- 5-4. STARTING VOLTAGE : 154 V Max.
- 5-5. TACHO GENERATOR VOLTAGE : 7.0

6. RATED LOAD CHARACTERISTICS

At MOTOR ONLY (C.W)

- 6-1. CURRENT : 0.83 A $\pm 10\%$
- 6-2. INPUT : 180.0 W $\pm 10\%$
- 6-3. SPEED : 1350 r/min
- 6-4. RATED TORQUE : 0.86 N·m
- 6-5. OUTPUT : 120 W

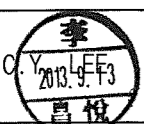

7. TORQUE CHARACTERISTICS

At MOTOR ONLY (C.W)

- 7-1. STALL TORQUE : 1.40 N·m
- 7-2. STARTING TORQUE : 0.65 N·m

8. DIELECTRIC STRENGTH

Motor shall withstand a potential of 1500V RMS for 1minute(1800V RMS for 1second) duration between coil leads and frame. (Cutoff Current 3mA)

DATE	SIGNATURE	CHANGE CONTENTS	REVISION
DESIGNED	CHECKED	APPROVED	MODEL S9I120GX-V12CE(A205) SPEED CONTROL MOTOR
		B. Y. JOEONG	
(주) 에스피지		RE-DATE	DRAWING NO.
 SPG Co., Ltd.		DATE 2013.09.12	A-183-2664-10

MOTOR SPECIFICATION

PAGE

2 of 2

9. INSULATION RESISTANCE

100 MΩ minimum at DC 500V MEGA TESTER between winding and frame.

10. TEMPERATURE RISE

10-1. WINDING : Temperature rise of the winding and the case are 85K(°C) or less respectively measured by the resistance method after rated operation under normal ambient temperature and humidity.

10-2. PROTECTED TYPE : Thermally Protected (Open:120±5°C, Close:76±15°C)

11. CONNECTION : See drawing No. A-183-2664-10

12. LEADS

12-1. MOTOR : UL3271 AWG20 (Black, White, Gray)

12-2. TACHO GENERATOR : UL1007 AWG22 (Red, Red)

12-3. COOLING FAN : UL3266 AWG20 (Yellow, Yellow)

12-4. CONNECTOR HOUSING : 5557-08R [MOLEX]

12-5. CONNECTOR TERMINAL : 5556T [MOLEX]

13. INSULATION CLASS : B class

14. DUTY : Continuous

15. TEMPERATURE RANGE : -10~+40°C(Nonfreezing)

16. HUMIDITY RANGE : RH 85% Max.(Non-condensing)



MECHANICAL

1. SHAFT RUN OUT : Measured - mm from shaft end - mm TIR Max.

2. SHAFT ENDPLAY : 0.3mm Max.

3. BEARING : Ball Bearing

4. LUBRICATION : Grease

5. AUDIBLE NOISE : 60dB Max. (No load)
 1) 50cm distance from mounting side
 2) Sound level meter "A" scale
 3) Background noise : 25dB Max.
 4) At rated voltage, rated frequency

6. COOLING FAN : AC Box Fan

7. IP GRADE : IP20 (At Motor:horizontal, Leads:downward)

8. LIFE : 5,000 Hour (Motor only)

9. WEIGHT : About 4.30kg

10. APPEARANCE : To be free from any defects that will adversely affect appearance.

11. MARKING : See drawing No. A-183-2664-10

12. DIMENSION : See drawing No. A-183-2664-10

(주) 에스피지

RE-

DATE

DRAWING NO.

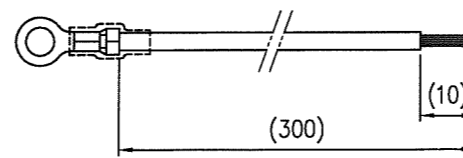
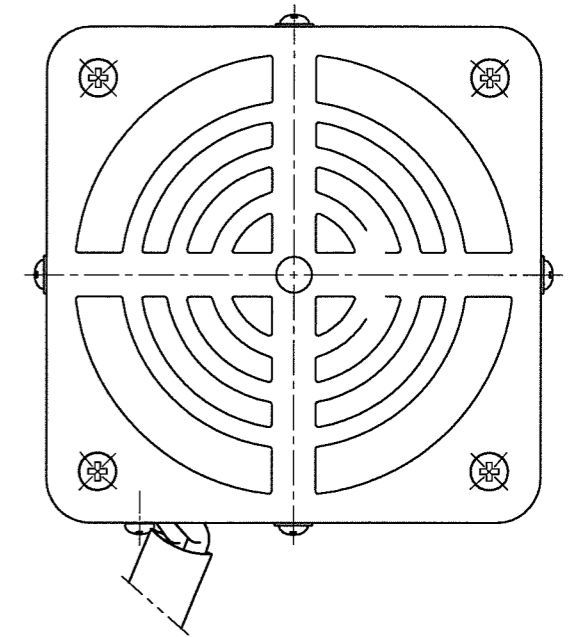
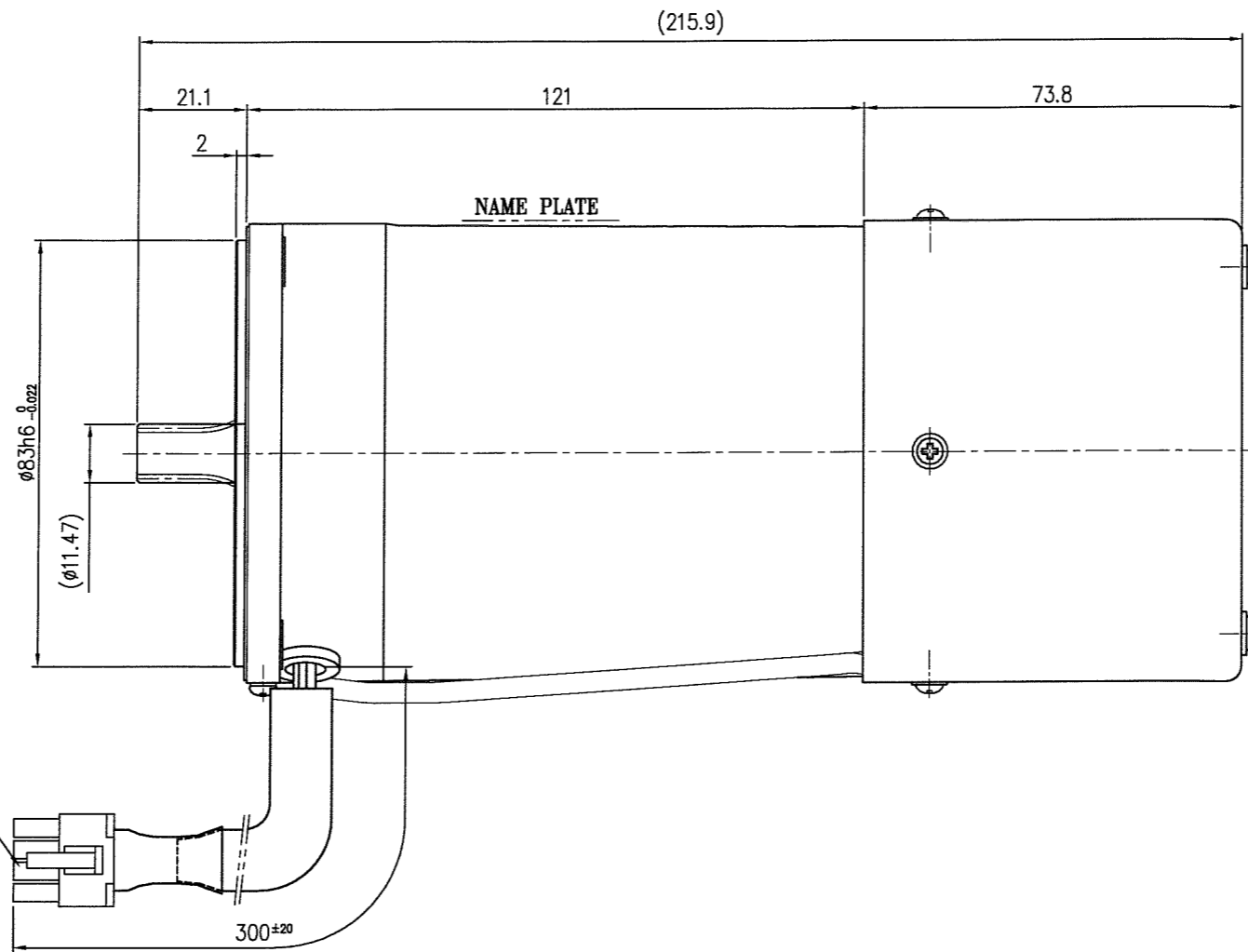
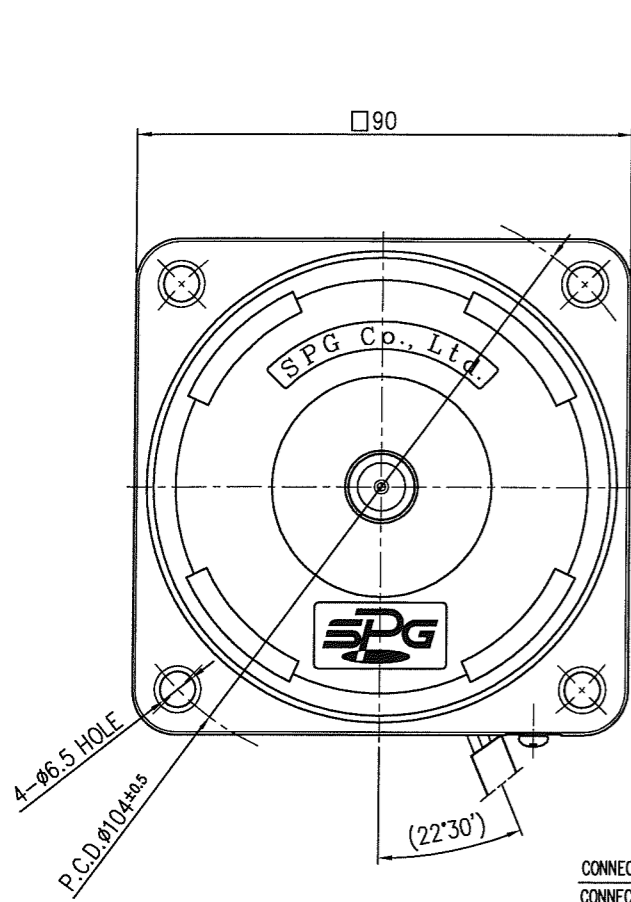
A-183-2664-10



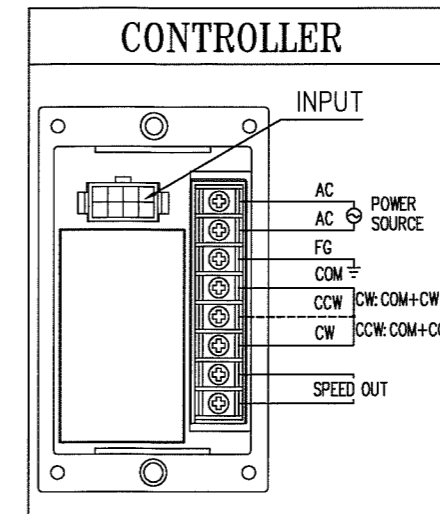
SPG Co., Ltd.

DATE

2013.09.12



EARTH LEAD WIRE ASS'Y



** Controller : SUA120IX-V12(A203)
 ** GEAR HEAD : S9KC series

NOTE

1. TYPE : 1Ph. INDUCTION MOTOR (SPEED CONTROL TYPE)
2. POWER SOURCE : AC 220V 50Hz
3. ROTATION : VIEWED FROM SPINDLE END C.W or C.C.W
4. END PLAY : 0.3mm Max.

DATE	SIGN	NOTE	REVISION
DATE	SIGN	NOTE	REVISION
MATERIAL	SURFACE FINISH	SCALE 1/1	TOLERANCE ± 1.0
DESIGN	CHECK	APPR.	NAME
AC MOTOR ASS'Y S91120GX-V12CE(A205)			
DATE	DWG NO.	A-183-2664-00	